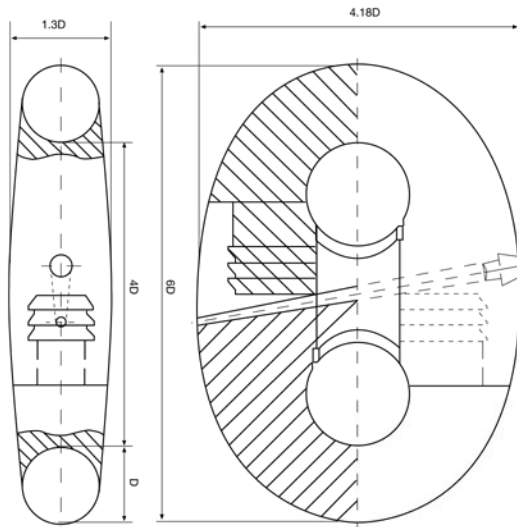


Slim Line Kenter Joining Links



Features

- One of the longest lasting removable connections for chain.
- The design is type approved by ABS, DNV and LR.



Mandal Fairlead Shackle

Model	Forerunner Circ (inches)	Breaking Load (m/t)	Proof Load (m/t)	Safe Work Load (m/t)	Weight (kg)
90M	6"-9"	90	55	30	7.8
120M	9"-11"	120	70	40	13.3



- This stainless steel mooring shackle with sleek shape designed to pass through fairleads. They are available in three sizes 90T, 120T and 180T. 300T can be supplied on special request.

Tonsberg Mooring Links

Model	Forerunner Circ (inches)	Breaking Load (m/t)	Proof Load (m/t)	Safe Work Load (m/t)	Weight (kg)
90T	7"-9"	90	55	30	11.2
120T	9"-11"	120	70	40	16.9
180T	11"-15"	180	95	60	25



- This galvanised steel mooring link of compact design is typically utilised as a connection between wire rope and fibre forerunner. They are available in three sizes 90T, 120T and 180T. 300T can be supplied on special request.

