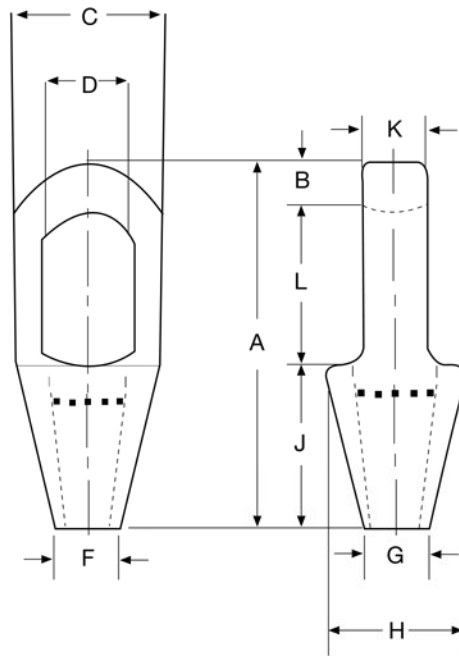


CLOSED SPELTER SOCKETS



Rope Dia. (mm)	Structural Strand Dia. (mm)	Weight Each (kg)	Dimensions (mm)									
			A	B	C	D	F	G	H	J	K	L
6-7	-	0.23	116	12.7	39.6	22.4	9.65	17.5	39.6	57.2	12.7	46.0
8-10	-	0.34	125	15.8	42.9	24.6	12.7	20.6	42.9	57.2	17.5	52.5
11-13	-	0.68	140	17.5	51.0	29.5	14.2	23.9	51.0	63.5	22.4	58.5
14-16	12-13	1.13	162	20.6	67.0	35.8	17.5	30.2	67.0	76.2	25.4	65.0
18	14-16	1.92	194	26.9	76.2	42.2	20.6	33.3	70.0	89.0	31.8	77.5
20-22	18-19	3.28	226	33.3	92.0	48.7	24.6	38.1	82.5	102	38.1	90.5
24-26	20-22	4.76	254	36.6	105	58.5	28.7	44.5	95.5	114	44.5	103
28-30	24-26	6.46	283	39.6	114	65.0	31.8	51.0	105	127	51.0	116
32-35	28	8.95	309	41.4	128	71.0	38.1	58.5	119	138	56.5	129
38	30-32	13.24	355	49.3	137	81.0	41.4	70.5	132	151	62.5	155
*40-42	33-35	16.32	390	54.0	146	82.5	44.5	76.2	140	165	70.0	171
*44-48	36-40	25.96	445	55.5	171	95.5	51.0	79.5	162	191	76.2	198
*50-54	42-45	35.83	502	62.0	194	111	57.2	95.5	187	216	82.5	224
*56-60	46-48	47.62	556	73.0	216	127	63.5	102	210	229	92.0	254
*64-67	50-54	63.50	597	79.5	241	140	74.5	114	235	248	102	270
*70-73	56-62	99.79	645	79.5	273	159	79.5	124	259	279	124	286
*75-80	64-67	125	686	82.5	292	171	86.0	133	292	305	133	298
*82-86	70-73	142	743	102	311	184	92.0	146	311	330	146	311
*88-92	76-80	181	787	102	330	197	98.5	165	330	356	159	330
*94-102	-	246	845	108	362	216	108	184	362	381	178	356

* Cast Alloy Steel

